



NEW HOLLAND

E150_B BLADE RUNNER



NET FLYWHEEL POWER	74 kW - 99 hp
MAX OPERATING WEIGHT	16 300 kg
PAT DOZER BLADE CAPACITY	2.19 m ³

 **NEW HOLLAND**

CONSTRUCTION

BUILT AROUND YOU

SPECIFICATIONS

BLADE



ENGINE STAGE IIIA

Net flywheel power (ISO 14396/ECE R120).....74 kW/99 hp
 Rated2000 rpm
 Make and model.....MITSUBISHI DO4 FR
 Typediesel, Common Rail, direct injection,
 turbocharged, intercooler

Displacement.....4.25 l
 Number of cylinders4
 Bore x Stroke.....102 x 130 mm
 Maximum torque at 1600 rpm.....375 Nm

Electronic engine rpm control dial type:

“Auto-Idling” selector returns engine to minimum rpm when all controls are in neutral position.

The engine complies with requirements set by European Directive 97/68/EC (2004/26/EC) STAGE IIIA.



ELECTRICAL SYSTEM

Voltage24 V
 Alternator50 A
 Starter motor.....5 kW
 Standard maintenance-free batteries2 x 12 kW
 Capacity.....88 Ah



HYDRAULIC SYSTEM

Higher capacity pumps, to supply higher flow at lower rpm;
Redesigned Main Control Valve, with added 2nd dipper spool and new Fail Safe Functions;
H.A.O.A. (Hydrotronic Active Operation Aid) to get the best hydraulic output according to operator/ application demand;
E.S.S.C. (Engine Speed Sensing Control) device, for total installed hydraulic power exploitation;
D.O.C. (Dipper Optimised Control) thanks to the 2nd dedicated spool in the Control Valve and to the Conflux system;
A.E.P. (Advanced Electronic Processor) interacting with the operator for selecting and monitoring main working parameters, maintenance programmes, self diagnosis and operating data storage thanks to the new monitor with a larger digital display and analogical gauges;

Two working modes:

- **S** = for normal digging operation;
- **H** = when maximum power is required;

Two Attachments modes:

- **A** = for attachments which require double pump flow;
- **B** = for attachments, such as breaker, featuring one way flow only.

Standard double pump flow device and Diverter Valve automatically actuated while selecting A;

Pipe pressure discharge push button to facilitate tooling changeover without piping oil leakage;

Super Fine hydraulic filter (8 micron) to grant perfect oil filtration, contributing to increase oil change interval

Main pumps:

Two variable delivery axial piston pumps
 Pumps automatically revert to zero with controls in neutral
 Maximum delivery.....2 x 130 l/min
 Pilot circuit gear type pump
 Maximum delivery20 l/min

Maximum operating pressure:

Equipment.....34.3 MPa
 Swing.....28.0 MPa
 Travel34.3 MPa
 Dozer blade.....27.4 MPa
 Pilot circuit.....5.0 MPa

Hydraulic cylinders

	Number	Bore	Stroke
Lift	2	100 mm	1092 mm
Dipper	1	115 mm	1120 mm
Bucket	1	95 mm	903 mm



TRANSMISSION

Type.....hydrostatic, two-speed
 Travel motors.....2, axial piston type, double displacement
 Brakesautomatic disc type
 Final drivesoil bath, planetary reduction
 Gradeability (continuous)70% (35°)
 Travel speeds

Low0 - 3.2 km/h
 High0 - 6.5 km/h

Drawbar pull14500 daN

“Automatic DownShift” device: to move travel motors to maximum displacement position with selector on speed position when greater traction is required.



SWING

Swing motoraxial piston type
 Swing brake.....automatic disc type
 Final driveoil bath, planetary reduction
 Swing Ringoil bath type
 Swing Speed.....11.5 rpm



CAB AND CONTROLS

Transparent cab roof.

Standard automatic conditioning.

Controlspiloted

Two cross pattern levers actuate all equipment movements and upperstructure swing.

One lever for blade lower/lift/angle/tilt/floatstandard

Two pedals with hand levers control all track movements, counter-rotation included.

A safety lever completely neutralizes the piloting circuit.



UNDERCARRIAGE

HD track chain with sealed bushings

Rollers

Track rollers (each side)6

Carrier rollers (each side)2

Length of track on ground2800 mm

Gauge1990 mm

Shoes curved type (triple grouser)500 - 600

Grouser height.....30 mm



PAT DOZER BLADE

Tot. width (wings extended/folded) x height3260/2475 x 815 mm

Maximum angle (left/right)25°

Digging depth.....610 mm

Lift height790 mm

Dozer max tilt height.....445 mm



CAPACITIES

litres

Lube oil18.5

Coolant14.0

Fuel tank200.0

Hydraulic system140.0

RUNNER*

SHORT RADIUS & EXCAVATOR DOZER

If your applications are often diverse and effected by space, transport dimensions and noise constraints or you just want the most productive piece of equipment you can buy, the New Holland **E150B Blade Runner** is the best machine you could choose.

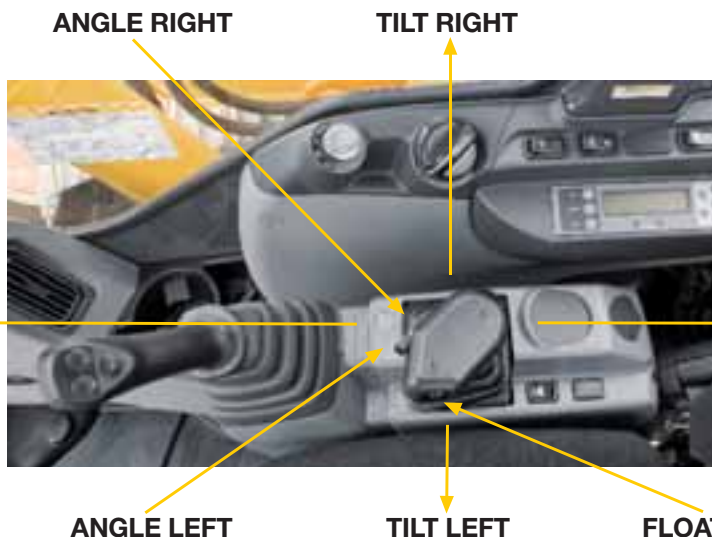
STANDARD PAT (Power Angle Tilt) DOZER BLADE



In addition to powerful digging and fine grade capabilities, the E150B Blade Runner features a standard real dozer blade **with foldable and lockable wings**. When completely extended, the blade clearing path is beyond the width of the tracks. When wings are folded and the machine is fitted **with 500 mm shoes, total width is lower than 2500 mm** and when **600 mm shoes are mounted, it is well below 3000 mm**, to meet transport requirements **without the need for a special escort**. Features which enhance **easy transportability for reduced operating costs**.

Standard heavy duty curved shoes, improve machine turning capability and weight distribution while maximising reliability and durability.

DOZER BLADE	
Dozer blade type	Power Angle Tilt (PAT)
Dozer blade capacity	2.19 m ³
Dozer blade overall width	3260 mm
Dozer blade overall width (Wings folded)	2480 mm
Dozer blade height	815 mm
Maximum angle	25° left/right
Maximum digging depth	610 mm
Maximum lift height	790 mm
Maximum tilt height	445 mm



SINGLE DOZER LEVER

With a conveniently located and easy to operate single lever, the operator can control all dozer blade movements: up & down, L&R tilt, 25 degrees angle L&R and float function.

ONE MACHINE TO COMPLETE A WIDE VARIETY OF JOBS WITH A SMALL INVESTMENT IN EQUIPMENT & PERSONNEL

RESEARCH & INNOVATION

New Holland is proud to introduce, also on the E150B Blade Runner, the unique and innovative **iNDr (integrated Noise & Dust reduction) Cooling System**, with the engine placed inside a single duct connecting the air intake and the exhaust outlet which are offset



SIMPLE SOLUTION VALUABLE ADVANTAGES

iNDr is a highly environmental friendly **New Holland patented solution** to maximise operator comfort and to allow to work even in urban areas with minimum disturbance for residents, while the ultra cleaned air granted by **iNDr** contributes to a perfect diesel combustion for increased engine efficiency and life.

**“Ultimate” - Low Noise Level
95dB(A)**



NEW COMMON RAIL ENGINE

This new generation Common Rail engine represents “state of the art” technology, designed to increase performance and production whilst reducing fuel consumption and pollution. This engine **complies with requirements set by European directive 97/68/EC (2004/26/EC) Stage IIIA.**



NEW HYDRAULIC SYSTEM

Two latest generation low noise pumps, a redesigned control valve with an added a second arm spool and a new working mode selection function, are further enhanced by **H.A.O.A. (Hydrotronic Active Operation Aid) Control** and by **A.E.P. (Advanced Electronic Processor)**.

Comfortably seated in the cab, the operator can easily select on the A.E.P., the required working mode out of four:

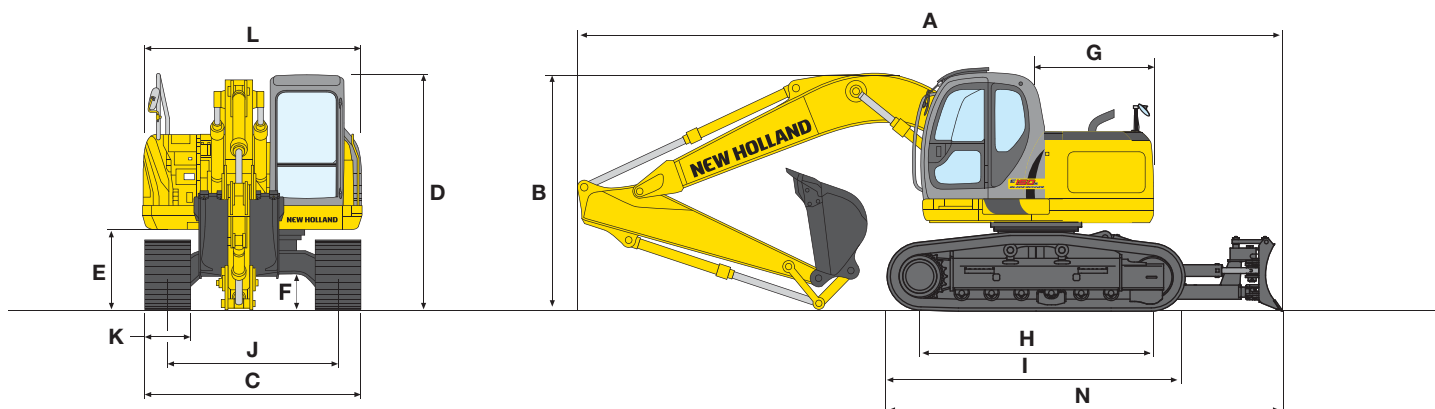
S mode for normal operations
H mode when maximum power is required

A mode for attachments which requires two way flow
B mode for attachments featuring one way flow only

Feel the passion New Holland have built into the E150B Blade Runner to grant you outstanding flexibility, production, comfort and reduced operating costs.

RUNNER*

DIMENSIONS (mm) - OPERATING WEIGHTS



ARM	A	B	D	E	F	G	H	I	J	L	N
2380 mm	6530	2720	2990	1040	485	1490	2800	3600	1990	2490	4770
2840 mm	8620	3070	2990	1040	485	1490	2800	3600	1990	2490	4770

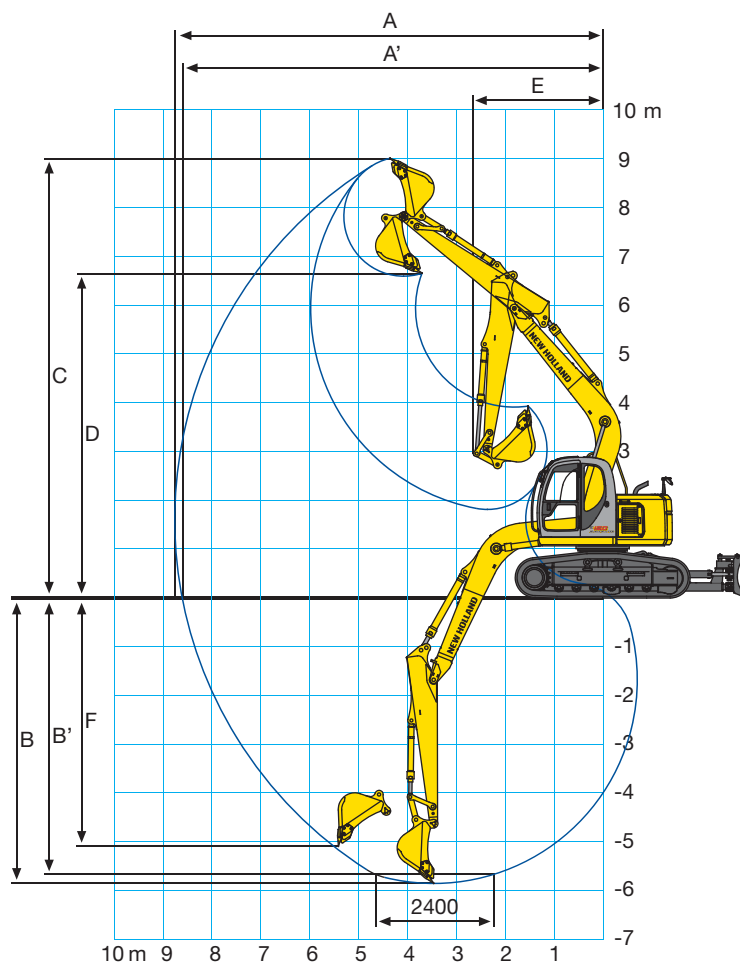
		E150B BLADE RUNNER	
K - Curved shoe width	mm	500	600
C - maximum track width	mm	2490	2590
Operating weight	kg	16100	16300
Ground pressure	bar	0.51	0.43
Max Blade width	mm	3260	3260
Blade width (wings folded)	mm	2480	2480
Blade height	mm	815	815
X - max lift	mm	790	790
Y - max digging	mm	610	610

DIGGING PERFORMANCE

ONE PIECE BOOM = 4680 mm

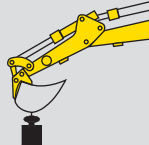
DIPPERSTICK		2380	2840
A	mm	8340	8780
A'	mm	8160	8610
B	mm	5360	5820
B'	mm	5130	5630
C	mm	9340	9710
D	mm	6900	7260
E	mm	2000	2400
F	mm	4730	5180

BREAKOUT FORCE		2380	2840
Bucket	daN	9010	9010
Dipperstick	daN	6440	5840



LIFTING CAPACITY

VALUES ARE EXPRESSED IN KILOS

	RADIUS OF LOAD									
	1.5 m		3.0 m		4.5 m		6.0 m		AT MAX. REACH	
	FRONT	SIDE	FRONT	SIDE	FRONT	SIDE	FRONT	SIDE	FRONT	SIDE

E150 BLADE RUNNER - DIPPERSTICK 2380mm - FRONT BLADE UP

HEIGHT											
+7.5 m									1510 *	1510 *	4.17
+6.0 m					2970 *	2970 *			1250 *	1250 *	5.77
+4.5 m					3310 *	3310 *	2540	2080	1190 *	1190 *	6.65
+3.0 m			6030 *	6030 *	4020	3200	2440	1980	1230 *	1230 *	7.11
+1.5 m			7450	5430	3710	2930	2310	1860	1360 *	1350	7.23
0			7110	5140	3510	2750	2220	1770	1630 *	1380	7.02
-1.5 m	5550 *	5550 *	7090	5130	3440	2680	2180	1740	1960	1560	6.45
-3.0 m	8470 *	8470 *	6350 *	5260	3500	2740			2630	2090	5.40

E150 BLADE RUNNER - DIPPERSTICK 2840 mm - FRONT BLADE UP

HEIGHT											
+7.5 m					2100 *	2100 *			1450 *	1450 *	4.91
+6.0 m					2570 *	2570 *	1870 *	1870 *	1230 *	1230 *	6.31
+4.5 m					2930 *	2930 *	2580	2110	1170 *	1170 *	7.13
+3.0 m			5170 *	5170 *	3730 *	3260	2460	2000	1200 *	1200 *	7.56
+1.5 m			7590 *	5550	3740	2950	2320	1860	1300 *	1200	7.67
0			7080	5110	3490	2730	2200	1750	1520 *	1220	7.47
-1.5 m	4790 *	4790 *	6970	5020	3380	2630	2140	1690	1700	1360	6.94
-3.0 m	7370 *	7370 *	6930 *	5110	3410	2650			2180	1740	5.98
-4.5 m			4330 *	4330 *					2800 *	2800 *	4.31

The table values refer to **ISO 10567** for excavator equipped with a bucket of 0.38 m3 which weights 335 kg and 600 mm shoes. The indicated load is no more than 87% of hydraulic system lift capacity or 75% of static tipping load. Values marked with an asterisk are limited by the hydraulic system.

AT YOUR OWN DEALERSHIP

The information contained in this brochure is intended to be a general nature only. The NEW HOLLAND KOBELCO CONSTRUCTION MACHINERY S.p.A. company may at any time and from time to time, for technical or other necessary reasons, modify any of the details or specifications of the product described in this brochure. Illustrations do not necessarily show products in standard conditions. The dimensions, weights and capacities shown herein, as well as any conversion data used, are approximate only and are subject to variations within normal manufacturing techniques.

Published by NEW HOLLAND KOBELCO CONSTRUCTION MACHINERY S.p.A.
Printed in Italy - LEADER Firenze - Cod. 30 469GB - Printed 04/09

Printed on recycled paper
CoC-FSC 000010 CQ Mixed sources



BUILT AROUND YOU

www.newholland.com