



NEW HOLLAND

E135 BSR

NEW HOLLAND KOBELCO



NET FLYWHEEL POWER	74 kW - 99 hp
MAX OPERATING WEIGHT	16 600 kg
BUCKET CAPACITY	0.42 - 0.70 m ³

 **NEW HOLLAND**

CONSTRUCTION

BUILT AROUND YOU

E135BSR*

TOP PERFORMANCE PACKED INTO A COMPACT MACHINES

The new E135BSR is an example of the latest Short Radius advanced technology.

It has been designed to satisfy customer needs, providing higher performance in terms of stability and productivity.

This new SR model features the revolutionary iNDR system that dramatically reduces machine noise level.

Customers appreciate all the E135BSR features and benefits where space and noise present constraints, like urban job-sites and road construction sites.



* A product of the global alliance between New Holland and KOBELCO

THE PERFORMANCE



- NEW** “iNDr” (integrated Noise & Dust reduction) cooling system
- NEW** environmentally friendly Common Rail engine
- NEW** triple articulation, offset and logging versions
- NEW** Flow & Pressure set-up system
- NEW** generation hydraulic pumps
- NEW** operator compartment
- NEW** hydraulic circuit

E135BSR

INCREDIBLY QUIET
EFFECTIVE DUST PROTECTION
REMARKABLE EASY MAINTENANCE



“Ultimate” - Low Noise Level
95dB(A)

RESEARCH & INNOVATION

New Holland is proud to introduce, the unique and innovative **iNDR (integrated Noise & Dust reduction) Cooling System**, with the engine compartment placed inside a single duct that connects the air intake and the exhaust outlet which are offset. The design itself, together with the correct positioning the insulation material inside the duct, minimise the engine noise.

A SIMPLE SOLUTION GRANTS MANY ADVANTAGES

iNDR is a highly environmentally friendly solution to maximise operator comfort and allowing work in urban areas with minimum disturbance for inhabitants. Moreover the ultra cleaned air granted by **iNDR** contributes to a perfect diesel combustion for increased engine performances and reduced fuel consumption and pollution.

INNOVATION & LEADERSHIP

E135BSR IS ALSO IN TRIPLE ARTICULATION VERSION

To further enhance the correspondence of **SR** and **Standard** machine projects, New Holland now offers the **Triple Articulation** version of the E135BSR. A version requested in many Markets and chosen by many Customers.

A flexible, productive, modern version orientated to Market demand and Customer satisfaction.

A very useful tool to accomplish specific jobs

New Holland now offers the **Triple Articulation** version of the E135BSR

VERSATILITY

E135BSR can be equipped, on request, with 2490 mm, 2590 mm or 2690 mm wide blade according to the width of shoes mounted on the machine.

A very useful tool to accomplish specific jobs with the same machine.

Enhanced machine versatility in refilling ditches, to minimised working time and to increase return of investment.

NEW HOLLAND REDEFINE SR CONCEPT

New Holland is proud to reinforce its field leadership by redefining the SR concept, being able to incorporate in compact designs the performances and features of standard models.

As a matter of fact the new E135BSR boasts a list of superior features and superb performances, all packed in its rounded and compact shape.

Low noise, high operator comfort and efficiency, superior productivity with reduced risk of machine damages for low operating costs.



E135BSR

NEW COMMON RAIL ENGINE



This new generation MITSUBISHI **Common Rail** engine represents "state of the art" technology, designed to increase performance and production whilst reducing fuel consumption and pollution.

The Common Rail system guarantees that fuel is injected into the cylinders at very high pressure, thus optimising its nebulisation and its mix with an increased quantity of turbocharged and after cooled air. Moreover, the quantity of fuel introduced into the cylinders is electronically controlled so that the "right quantity" is injected at the "right moment" and combined with extra fresh air to provide peak efficiency output from the engine, whilst reducing fuel consumption and emissions of dangerous pollutants. At the same time, noise is also considerably lowered.

A new, durable, efficient, comfortable and economic engine which contributes to reduced operating costs and increased profits.

NEW HYDRAULIC CIRCUIT

EFFICIENCY AND CONTROLLABILITY

To obtain a Hydraulic Circuit which is much more efficient, controllable, fast, powerful and which consumes less fuel than previous one, New Holland has been working on almost all components. Starting from the state-of-the-art, last generation, low noise pump to the redesigned control valve with added second arm spool, high swing output torque and new working mode selection functions. All these improvements, combined with rigorous inspections to drastically reduce pressure loss in the whole Circuit, result in smooth and precise movements, better machine controllability especially on operations that require combined movements.

These outstanding characteristics are further enhanced by the new **H.A.O.A. Control**.

H.A.O.A. (Hydrotronic Active Operation Aid)

Hydrotronic Active Operation Aid is the most effective available combination of an extremely advanced electronic technology that provides a "just in time" comprehensive control of all machine functions, and a deeply refined and sophisticated hydraulic system.

H.A.O.A. continuously optimises hydraulic output according to operator and job demand, providing the best machine controllability, productivity, operator comfort and fuel savings.

RESPECTING THE ENVIRONMENT

The E135BSR is compliant with European Directives concerning electromagnetic compatibility and noise level. The emissions of the new Tier 3A MITSUBISHI engine have been dramatically reduced and are, as shown below, lower than standard requirements.

CO: 1.9, HC + NOx: 3.9, Particulate: 0.18 (*)

...a real Environmentally Friendly machine.

(*) all data are expressed in g/kWh



ADVANCED TECHNOLOGIES & HYDRAULICS

A.E.P. - (Advanced Electronic Processor)

A.E.P. is a new Electronic Processor that interacts with the operator for selecting and monitoring all main working parameters, maintenance notifications, self diagnosis and operating data storage.

All this information is displayed in the new monitor, which features a larger back-lit, easier to read digital display with analogue gauges.

Simply select the requested working mode and A.E.P. presets the hydraulic system to accomplish the job in the easiest and most productive way:

- **S mode** for normal working operations

- **H mode** when maximum power is required

Two additional modes are available for special applications and to operate tools like breakers and crushers:

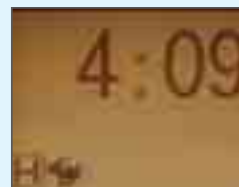
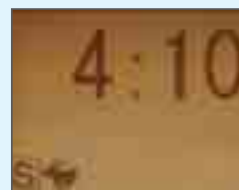
- **A mode** adjusts the attachment circuit for tools which require two way flow.

A dedicated switch on the dashboard, enables the operator to select two pumps oil flow

- **B mode** for attachments featuring one way flow only.

Customers may choose to equip the machines with optional hammer & crusher and/or bucket rotation complete circuits.

Both in A and B working modes the operator, by using the buttons on the monitor, may adjust the flow by 10 l/min steps to perfectly match the parameters of the attachment being used. In addition, the operator can save to memory 9 flow values in both A and B working modes.



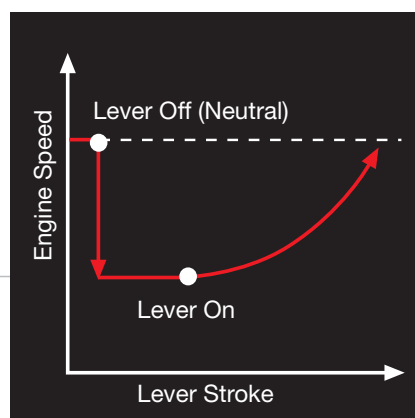
D.O.C. (Dipperstick Optimised Control)

The newly redesigned Control Valve features a second spool dedicated to dipperstick operation. The movement "dipper out" is now achieved with a double flow, i.e., using the flow of two pumps. The "dipper in" movement is even faster because of the double pump flow combined with the "Conflux", or recirculation of unused oil which is diverted from return to tank.

A perfect combination of speed, efficiency, precision and increased production.

AUTO IDLING DEVICE

Engine speed is automatically reduced when the joysticks are left in neutral, helping effectively to save fuel, to reduce noise and pollution and to increase engine lifespan. When one or both joysticks are moved out of neutral the engine quickly returns to full speed.



E-135BSR



NEW CAB INTERIOR

The interior of the cab has been completely re-designed to maximise operator comfort and to enable optimum operator performance. All switches and controls are now ergonomically positioned on the right side, easy to find and to reach. The radio and the new, more powerful and effective automatic air-conditioning system are standard equipment, creating an agreeable working atmosphere regardless of external weather conditions. At the same time, new interior design and materials create an elegant feeling. Rigid cab construction, combined with six silicon liquid filled viscous dampers, minimises vibrations. Threaded holes, built into the cab structure, enable fast and easy attachment of optional FOPS structure and front guard, effectively contributing to operator safety.



NEW A. E. P. MONITOR

The newly designed A.E.P. Monitor features analogue gauges which provide information at a glance, regardless of the operating environment.

The digital Display Screen has been enlarged to further enhance visibility.

Maintenance information is clearly displayed and the self-diagnostic function provides an early warning detection of malfunctions.

Details of any previous breakdown or malfunction are also stored.



NEW ONE-HAND WINDSCREEN OPENING

One-touch lock release simplifies opening and closing the front window, while a new mechanism makes it lighter.



INSTRUMENT LAYOUT

In-cab switches and controls have been moved to the right-hand side in an easy to reach and more ergonomic position, thus improving operator comfort and convenience.

OPERATOR SAFETY AND COMFORT



WIDER CAB ACCESS

The left console which incorporates the safety lock lever, now lifts-up 10 degrees more than in the previous model. A greater angle assures a wider cab access: an easier entry and exit for enhanced operator comfort.



NEW COMFORTABLE SEAT

New comfortable contoured seat which can be adjusted in all directions, together with or independently of side consoles. The armrests, integrated on side consoles, can be lifted/lowered into four different positions and inclined, enabling the operator to set the correct position for maximum convenience and comfort.

E135BSR

DESIGNED TO EFFECTIVELY CUT OPERATING COSTS

CLEAN AND ACCESSIBLE LAYOUT

The new machine layout has been designed to make inspections, maintenance and servicing much easier and less time-consuming.

The engine oil filter, the fuel filter and the water separator are remote mounted and easy to reach from ground level. Both the fuel filter and the water separator, which removes contaminants and water, have an important function for engine performance and durability.

Cooling components (radiator, hydraulic oil cooler and intercooler) are now mounted in parallel, which means increased cooling efficiency for higher component reliability whilst being easier to check and clean.



A MODERN DESIGN COMBINED WITH STATE-OF-THE-ART TECHNOLOGY

The simplified layout of the New Holland E135BSR includes most components, positioned under both the right and the left side panels, enables easy access from ground level and makes maintenance and inspections quicker and less expensive. Reduced maintenance and service costs to keep machines in perfect condition: low maintenance costs, high reliability and durability, minimised owning and operating costs for your improved profit.

EASY MAINTENANCE & SERVICING



VISUAL CHECKING & EASY CLEANING OF iNDR FILTERS

The iNDR filters are located in front of the cooling components (radiator, hydraulic oil cooler and intercooler) now mounted in parallel for improved cooling efficiency. The air goes directly from the intake duct through the iNDR stainless-steel filters which capture dust. The intake cleaned air, going through the cooling components, reduces clogging risks and minimises the cleaning intervals of maintenance routine. If they appear dirty during the start up inspection, they are easy to remove for cleaning without tools from ground level.



FUSES

The fuses are inside the cab, protected from dust and water and are easy to reach and control.

LONG LIFE HYDRAULIC OIL

The long-life hydraulic oil used by New Holland features excellent anti-emulsion characteristics as well as an optimised mix of anti-wear and anti-oxidants additives that **boost the service life to 5,000 hours**, reducing the number of oil changes necessary and resulting in an impressive **reduction in operation costs and a higher respect for the environment**.

INTERNAL CAB MAINTENANCE

- Air conditioning filter can easily be removed from under the seat without tools from ground level for easy cleaning.
- Detachable two-piece floor mat with handles for easy removal. A floor drain is located under the mat to facilitate inside cab cleaning.



E135BSR

DESIGNED TO

- Effectively operate in close quarters
- Ensure durability and long term value
- Higher production with lower fuel consumption
- Respect the environment and our future



NEW HOLLAND. THE POWER OF A GLOBAL BRAND

New Holland is a global brand with a key position in the Construction Equipment business. It supplies a **complete range of 13 product lines and 80 basic models** split into **Compact line** and **Heavy line**. It operates in all the main markets, such as **Europe, North and Latin America, Africa, Asia and Middle East** with the same technology and under the same logo and brand. It manufactures **durable, safe and productive** machines aimed at supporting customers in developing their own business. **Dealers are company partners.** They play an important role to support the brand in their territories through intense professional relationship with Customers. New Holland is reinforced by its **global alliance with Kobelco**: world leader in hydraulic excavator technology.



AT YOUR OWN DEALERSHIP

The information contained in this brochure is intended to be a general nature only. The NEW HOLLAND KOBELCO CONSTRUCTION MACHINERY S.p.A. company may at any time and from time to time, for technical or other necessary reasons, modify any of the details or specifications of the product described in this brochure. Illustrations do not necessarily show products in standard conditions. The dimensions, weights and capacities shown herein, as well as any conversion data used, are approximate only and are subject to variations within normal manufacturing techniques.

Published by NEW HOLLAND KOBELCO CONSTRUCTION MACHINERY S.p.A.
Printed in Italy - LEADER Firenze - Cod. 73301 448GB - Printed 07/08

Printed on recycled paper
CoC-FSC 000010 CQ Mixed sources



ELEMENTAL
CHLORINE
FREE
GUARANTEED

FIAT
GROUP



BUILT AROUND YOU



www.newholland.com